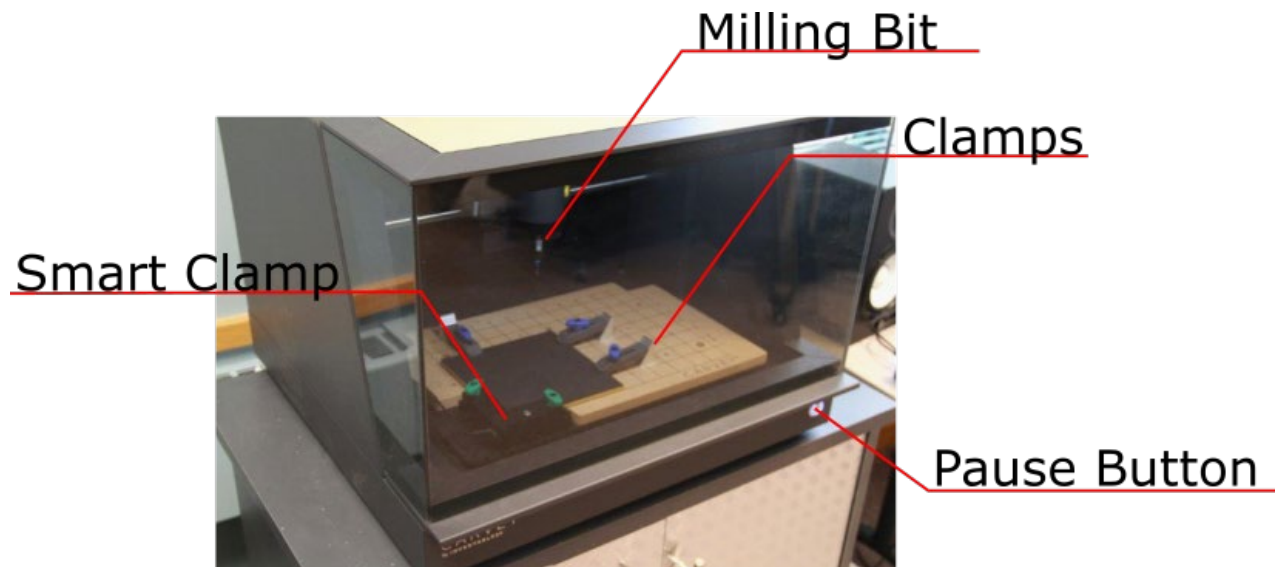


## What is the Carvey?

The Carvey is a carving machine that carves a design into a piece of material (either wood or plastic) based on information given to it by the computer. Using the Easel program, you can create/import a design and send it to the Carvey to be carved into a piece of wood or plastic. Despite the size of the machine it is very simple to set-up and use. If you would like to bring your own material to use with the Carvey, please make sure the material is no more than 8 inches wide by 12 inches long and 2.5 inches thick, 1 inch thick if you'd like to cut through the material completely. Please check the "Bringing Your Own Material" section for full details.

## Getting Started with the Carvey



## Using the Carvey Safely

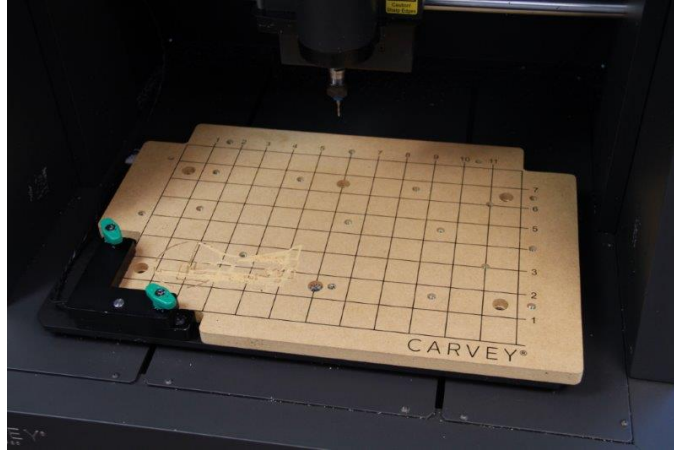
**The milling bit is sharp**, so be careful when adjusting screws to make sure your hand isn't near it.

While the machine automatically stops when you open it, please use the button on the front of the machine to pause it before opening it.

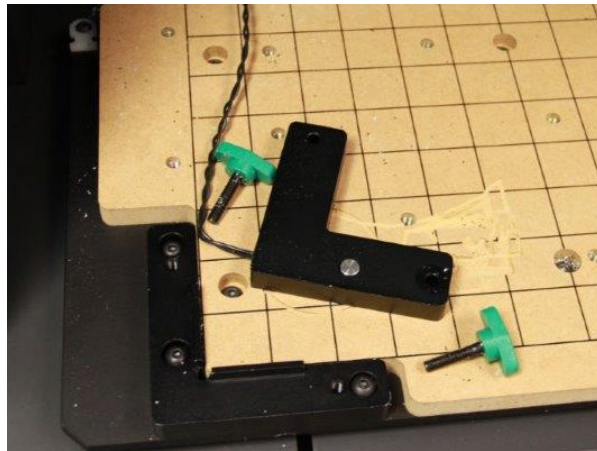
## Setting Up the Carvey

### 1. Open and Clear the Carvey

Open up the Carvey and clear away any screws, clamps and/or step blocks.

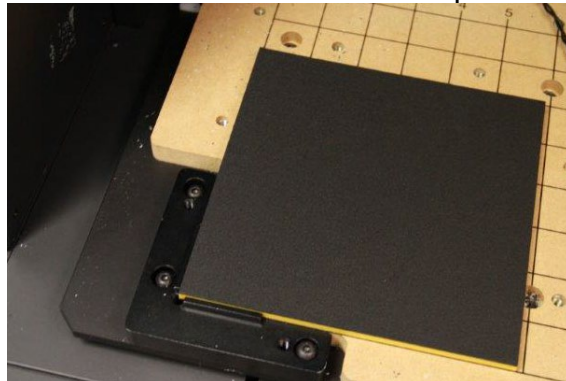


Once clear, remove the screws for the Smart Clamp and lift it off the corner.

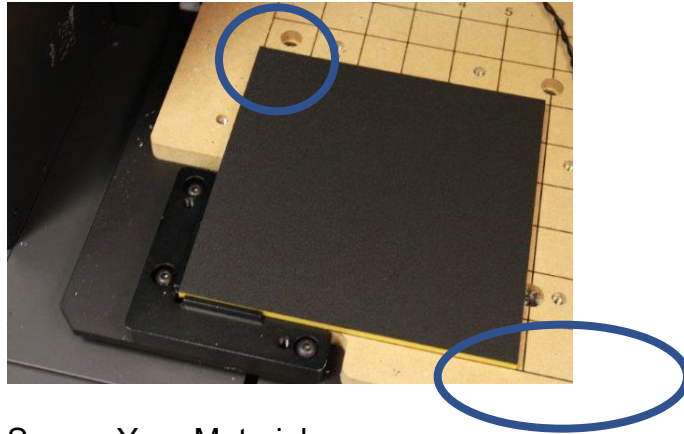


### 2. Place Your Material

Place your material flat on the bed and align it with the bottom left corner where the Smart Clamp was.

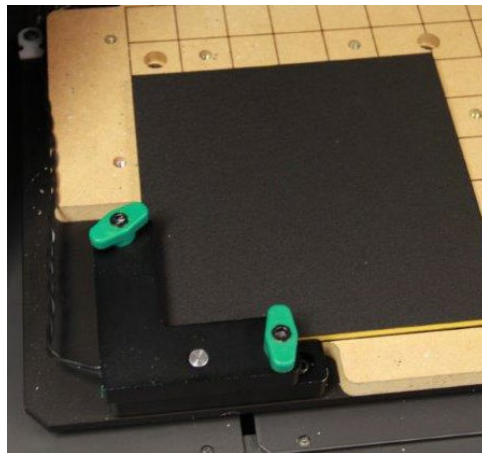


Make sure that the material is aligned with the grid on the Waste Board.

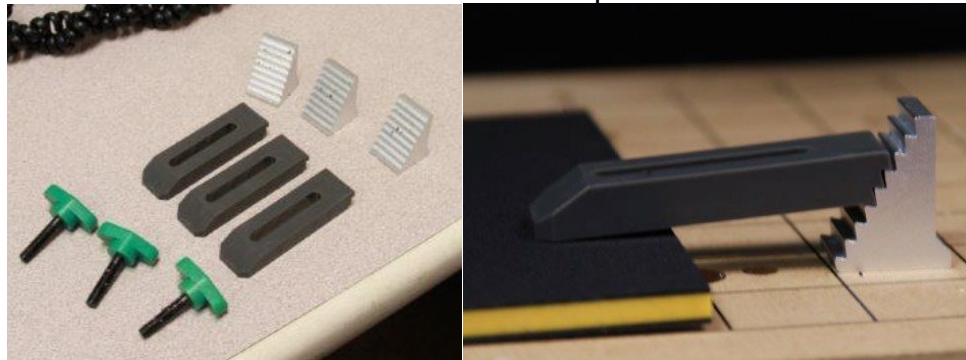


3. Secure Your Material

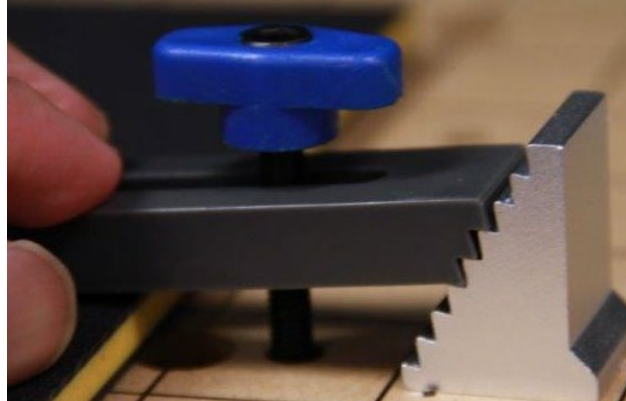
Take 2 screws and fasten the Smart Clamp atop the material, depending on the height of the material you may need to use different screws.



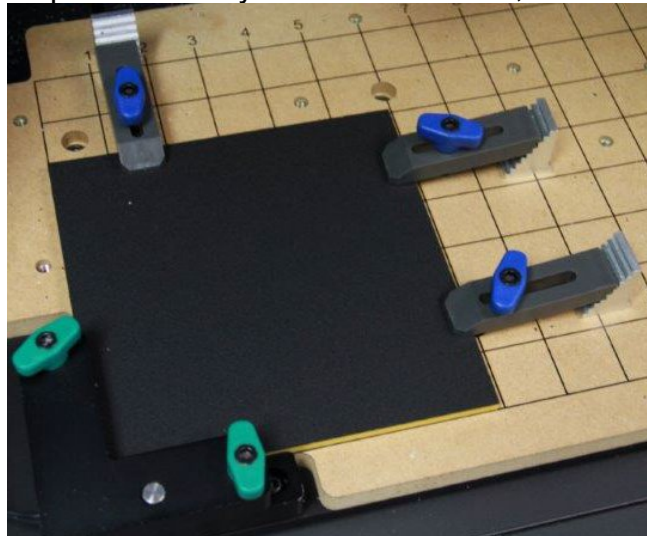
For the secondary clamps, take one of the long blocks with a hole in the middle and rest it on one of the step blocks as shown below.



Then take a screw and fasten it until the block is fastened to the material and it doesn't move.



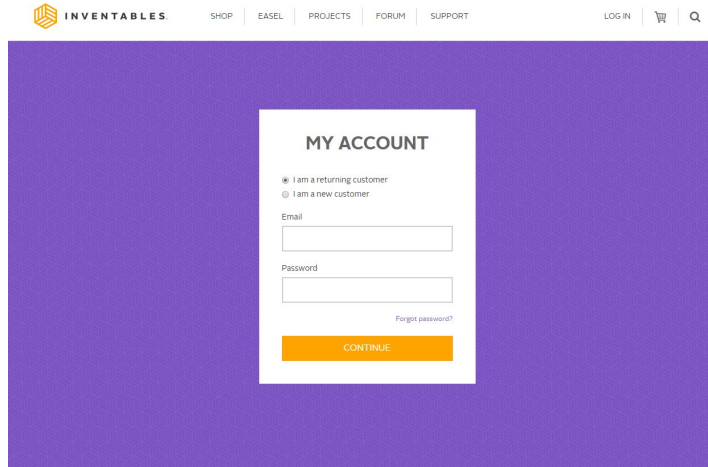
Repeat as many times as desired, 2 – 3 clamps is recommended.



## Connecting to Easel

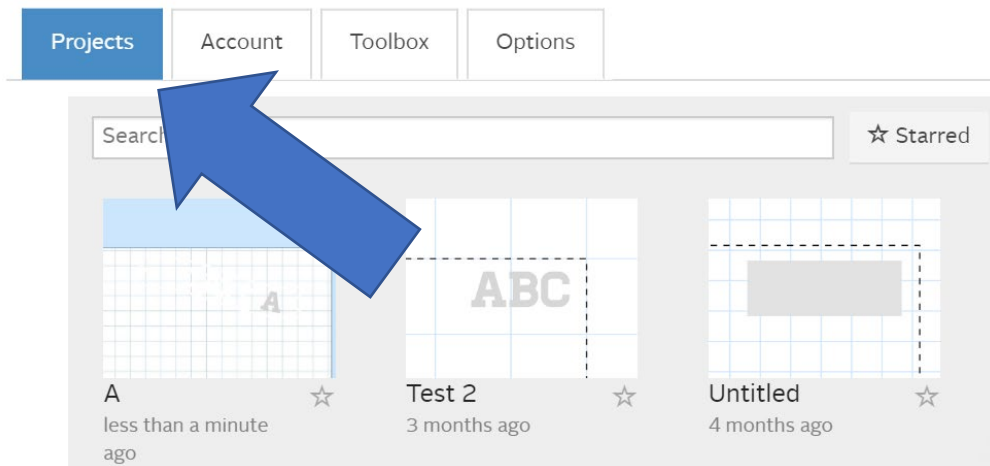
### 1. Sign into Easel

Open Easel on the computer and sign into your account. If you haven't made an account, look at the **Carvey Design Document**



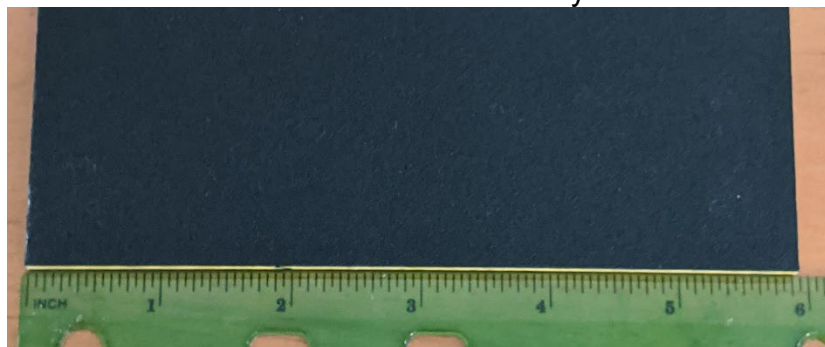
### 2. Open Your Design

Select the design to open on Easel



### 3. Checking the Measurements

Make sure the measurements match your material



Material: Birch Plywood	Bit: 1/8 in	+	Cut Settings <span style="color: red;">!</span>
----------------------------	----------------	---	---

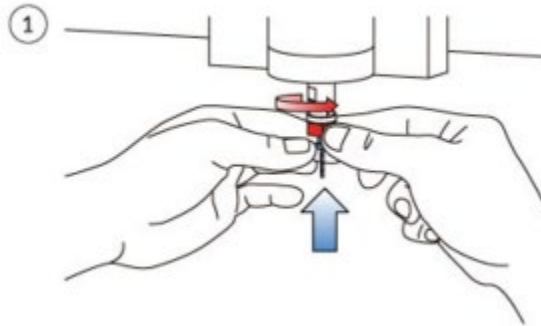
Material dimensions:

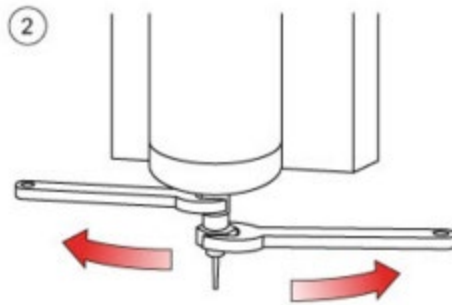
X:	<input type="text" value="12 in"/>
Y:	<input type="text" value="8 in"/>
Z:	<input type="text" value="0.5 in"/>

Need to Update to reflect measurement

#### 4. Changing the Bit

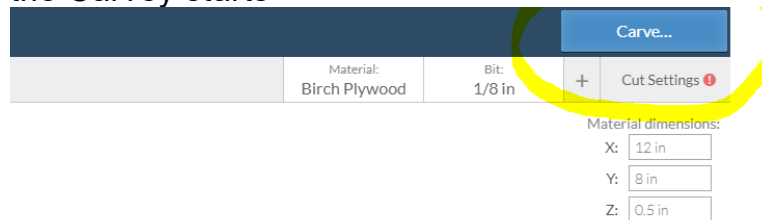
Check if the bit is already in the machine. If not, remove the old bit and screw in the new one.





## 5. Starting Carving

Click on Start Carve and click continue on each pop-up window until the Carvey starts



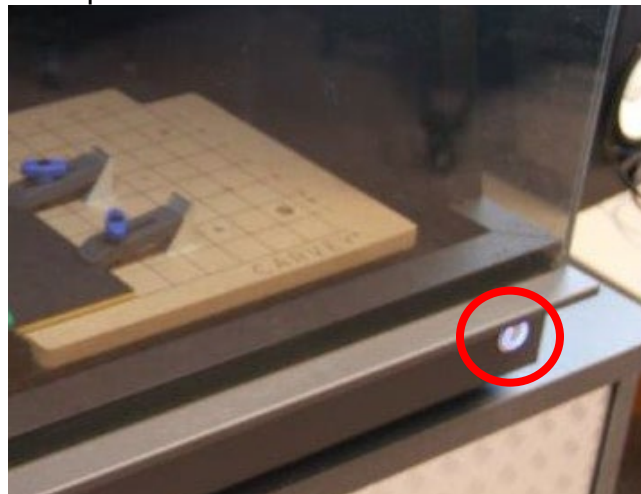
## Monitoring the Carvey

### 1. Things to Watch For

- The Carvey can be loud at times but make sure it doesn't sound louder than normal
- Make sure the wood doesn't move

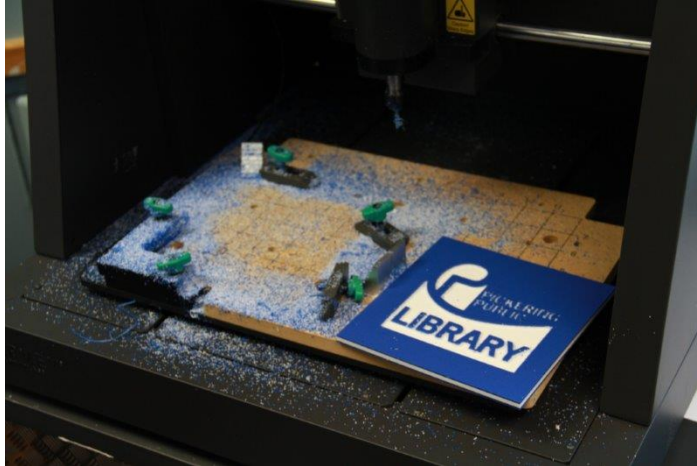
### 2. How to Stop the Carvey

- Press the button on the front of the Carvey to pause it and call the Maker Space staff over to look at the machine

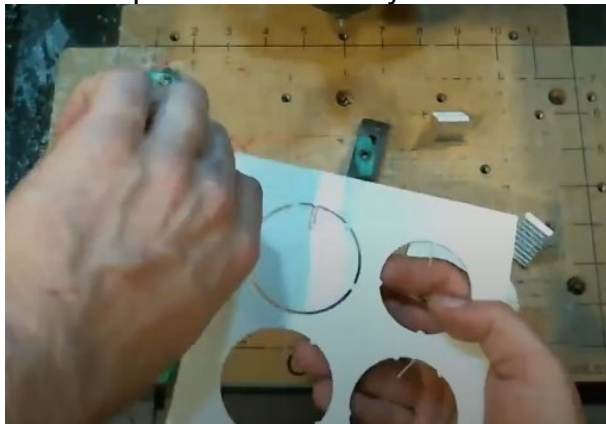


## Finishing Touches

1. Vacuuming the Carvey  
Use the provided Vacuum to clear all sawdust from inside the Carvey
2. Unclamp the Material  
Unscrew the clamps to remove the material



3. Cutting  
Use the provided files or your own cutting implements to remove tabs



4. Sanding  
Use provided or your own Sandpaper/sponge to smooth the wood surface

