

What is the Vinyl Cutter?

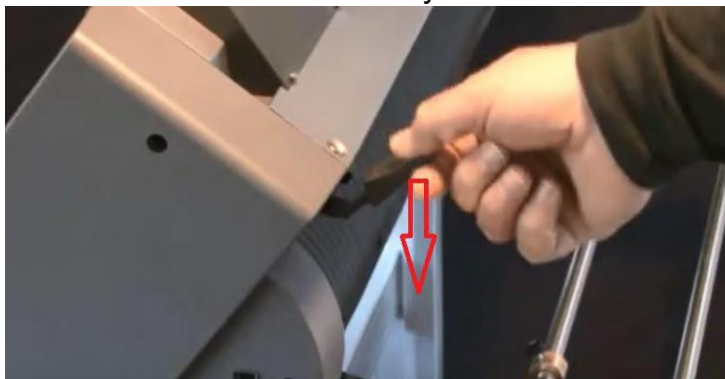
The vinyl cutter is used to take a vector graphic created on a computer and cut the outline into a sheet of vinyl. Depending on the vinyl you can either heat press the design onto a shirt or stick the design onto a surface such as a wall, window, etc.

Preparing the Vinyl Cutter

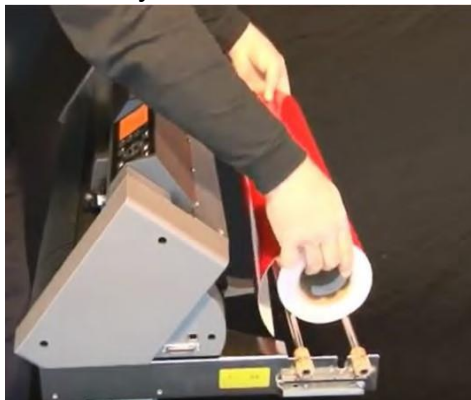
1. Turn the machine on using the power button located on the left side.



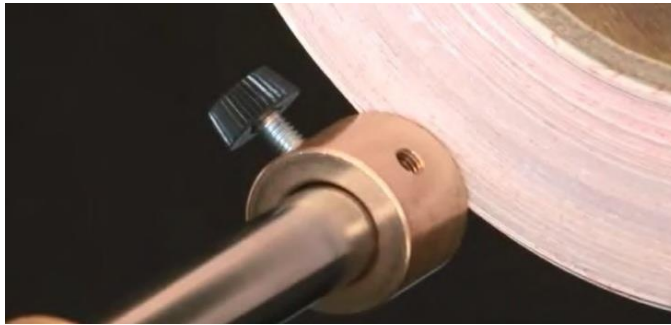
2. Unlock the lever down to load the vinyl.



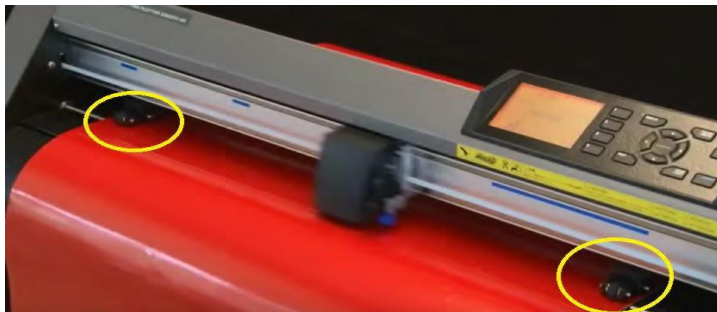
3. Rest the roll of vinyl on the rails



4. Adjust the stoppers as necessary. The stoppers should be right against the vinyl on both sides



5. Insert the vinyl through the feeder and adjust the rollers to line up with the edges of the vinyl. Each roller should be lined up with one of the blue lines above them.

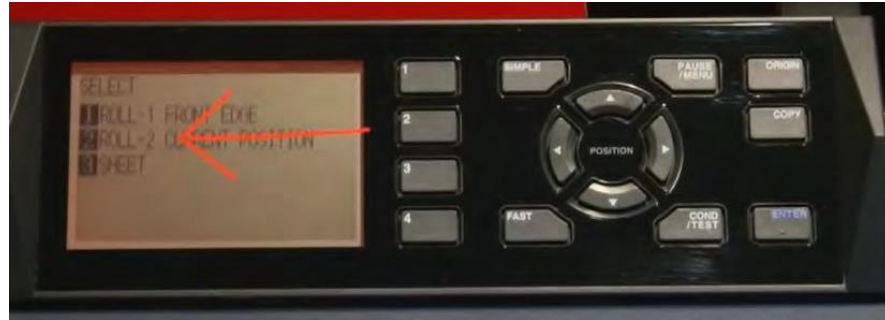


6. Lock the vinyl in place



Machine Interface

1. Select Option #2 to calibrate the Vinyl Cutter



2. Press Number 2 to select it



3. Wait until you see READY on the screen



4. Hold down the blue ENTER button and if you're using Heat Transfer Vinyl, Press 1 and if you're using Sign Vinyl, Press 2



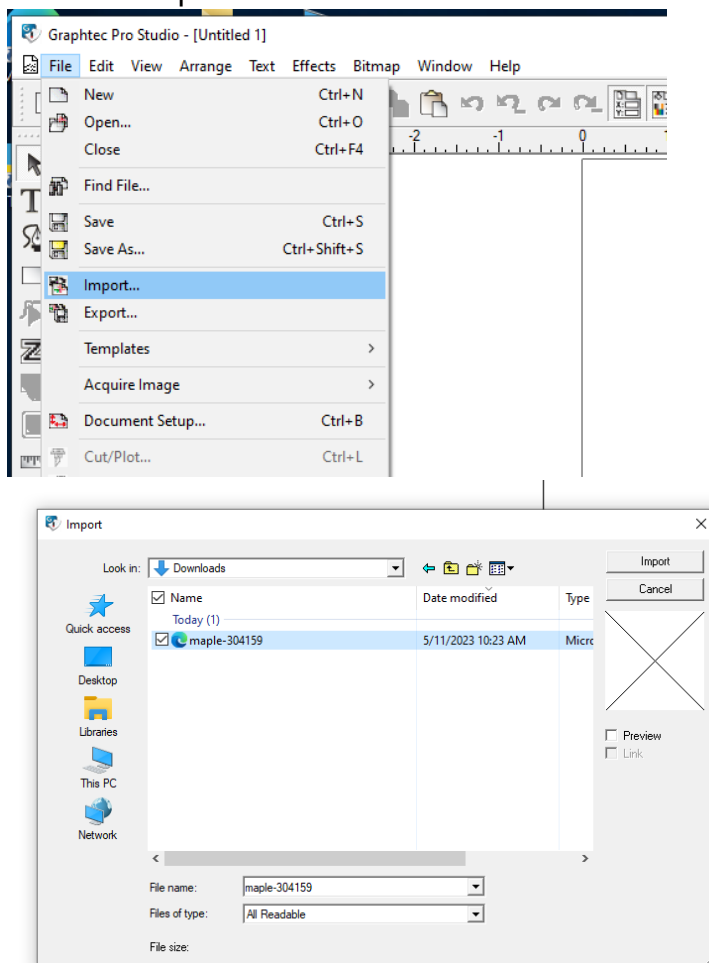
5. You're ready to use the computer to input your design!

Using Graphtec Pro Studio

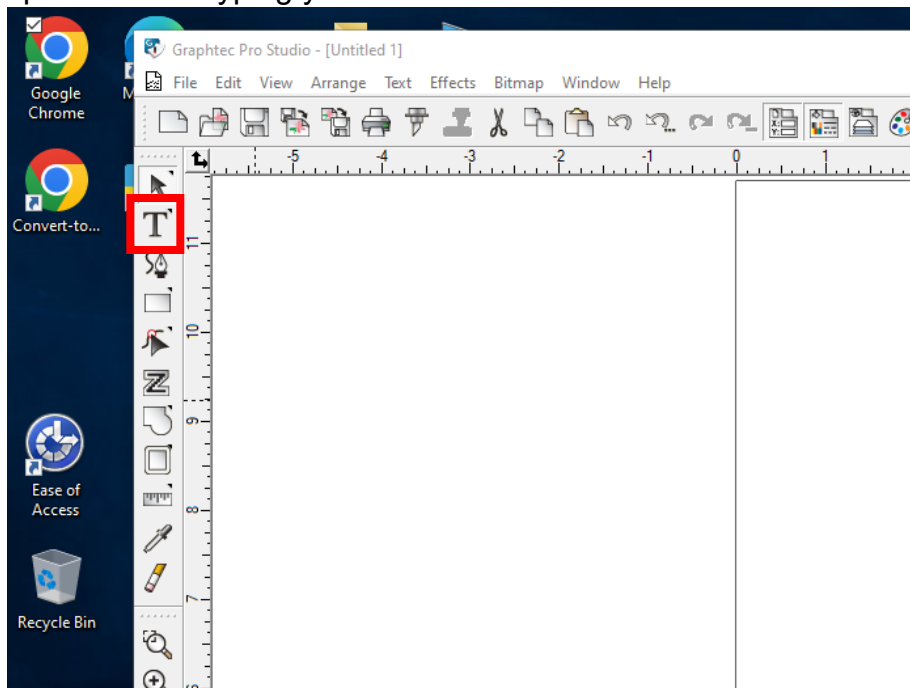
1. Using Graphtec Pro Studio, you can create text designs or import SVG files to create a design to send to the Vinyl Cutter. To convert an image to an SVG, refer to "Vinyl Cutter - How to Trace Your Image into a Vector"



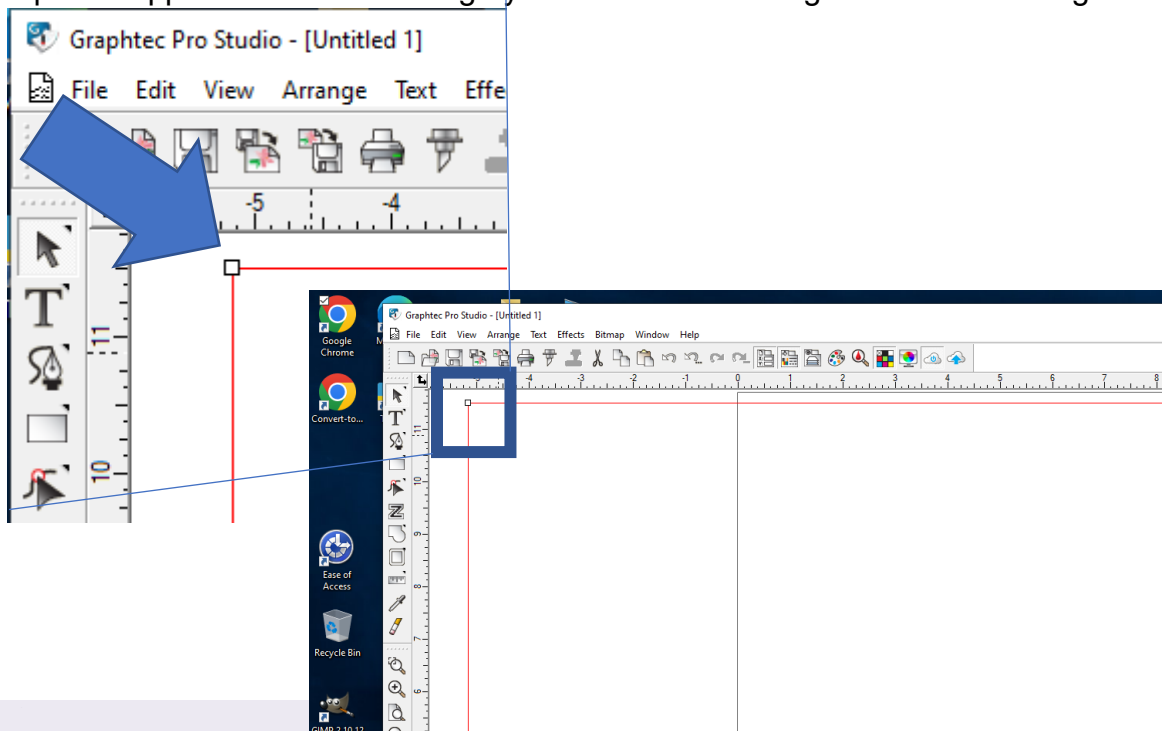
2. If you want to import a SVG file, click "File" and choose "Import". This will open a window where you can browse the computer for your vector file. Click on it and click the "Import" button



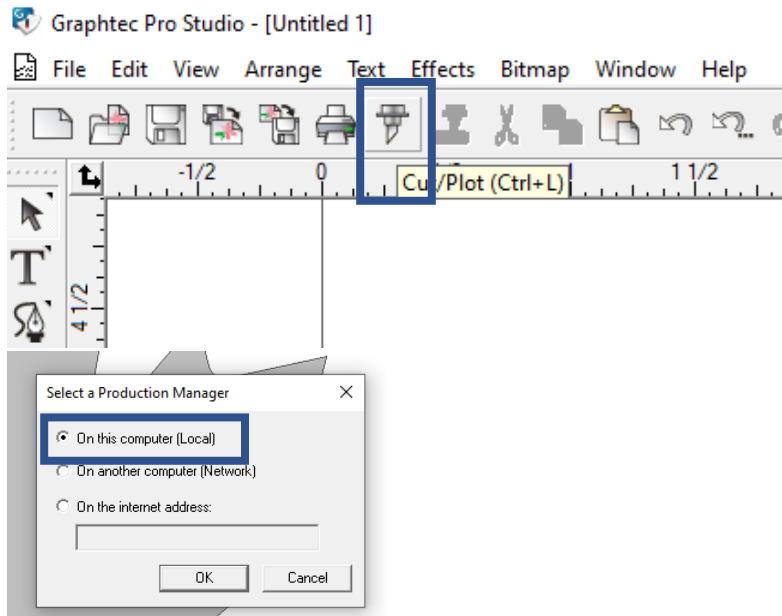
3. If you want to create your own text design, click the “T” tool in the left toolbar and click on the design space to start typing your text.



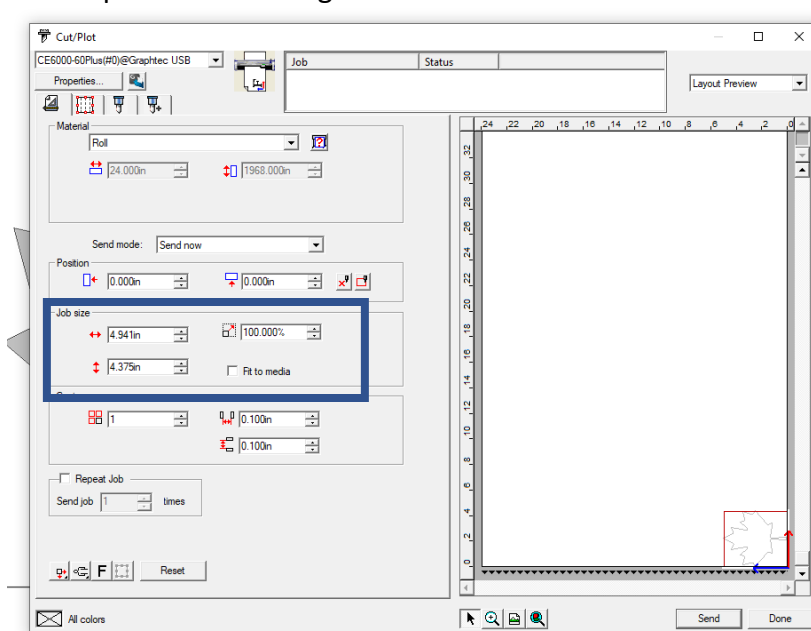
4. The text can be changed in the DesignCentre window on the right side with the usual text options (eg. Alignment, spacing, size, etc.)
5. You can make adjustments your file by click on it to select it. This will make squares appear around the design you can click and drag to resize the design.



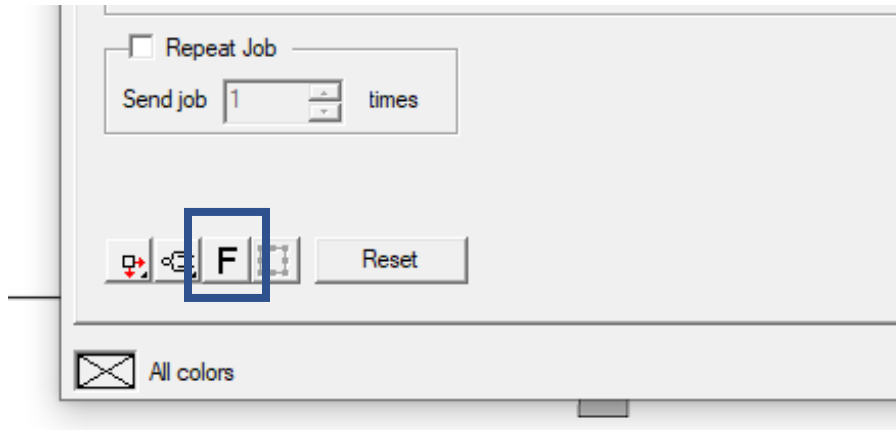
- When you're ready to cut your design, click the "Cut" icon beside the "Print" icon. The program will then ask if you want to do a Local Connection. Click "Yes". Another program will open that needs to run in the background so Graphtec Pro Studio can connect to the cutter.



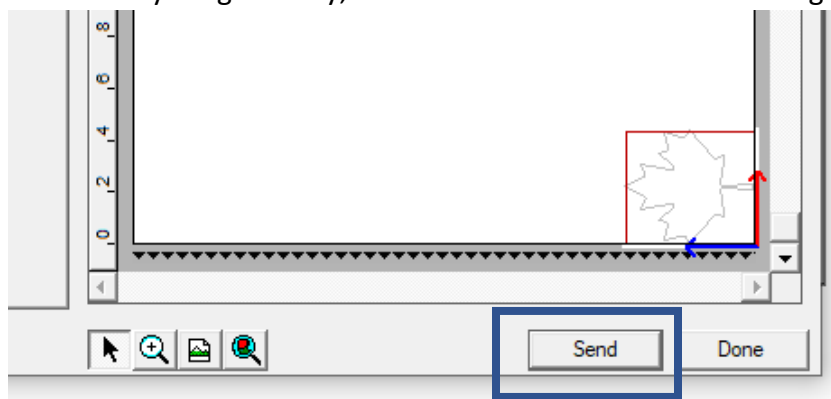
- The Cut/Plot window will open which will allow you to make any more adjustments, as well as preview the design.



- When cutting to Heat Transfer Vinyl, be sure to reverse the design



- When everything is ready, click Send and it should start cutting.



Removing your Design

- After the design has been cut, wait for the screen to display "Ready" again.



2. Unlock the vinyl from the machine by pressing down on the lever in the back



3. Look carefully for the cuts of your design in the vinyl (sometimes it's easier to look on the flip side) and pull the vinyl until the entire design is under the cutting groove in the front of the machine.



4. Using a cutter, cut along the ridge to make a straight cut through the vinyl.



5. Re-align the vinyl in the machine so it's ready for the next person.

